



WESTON  
COLLEGE

**Student  
Accommodation  
Booklet**

[www.weston.ac.uk](http://www.weston.ac.uk)

# Welcome

For many of you, coming to Weston College to study a Degree will also mean moving away from home for the first time. So one of the first things you will want to sort out is your accommodation.

“Where will I be living?” is an important question when you are thinking about university life – we know that everyone has different requirements.

We are also aware how important it is to choose the right accommodation.

With the help of this guide we aim to provide the information you need to make your selection as easy as possible.

The HE unit at Weston College is here for you throughout the year, providing a friendly and helpful service. We are here to advise on, and allocate the degree level student accommodation and are able to help those students who may wish to find their own privately rented accommodation. We also help second and third year students find rented accommodation and will give information and advice on what to look for when privately renting.

Also to help you settle in we will have second or third year students living in some of our properties. They will be on hand to pass on their advice and knowledge, and help if you experience any problems.

Above all we want to ensure that the experience of living away from home runs smoothly, so please contact us with any queries you have, be they great or small.

# Take a look around...

## 3-4 About Weston-super-Mare

### Properties

- 5-6 Ashcombe Road
- 7-8 Birnbeck Halls
- 9-10 Kew Road
- 11-12 Maderia Cove
- 13-14 The Alex
- 15-16 Warwick Court

### Useful information

- 17-18 Private rented accommodation
- 19 How to apply
- 20 Conditions of offer
- 21-22 Finance and contract information
- 23-24 Map of locations
- 25 Summary of properties
- 26 Useful contacts

For further information @ [he.unit@weston.ac.uk](mailto:he.unit@weston.ac.uk) 01934 411 403 [www.weston.ac.uk](http://www.weston.ac.uk)





**Weston-super-Mare is a great place for students to study. It's a proper English seaside resort with its own high-flying Weston Wheel, brand new Grand Pier, and Marine Lake to paddle in. It buzzes with loads of bars and restaurants on its smart new promenade.**



# About Weston-super-Mare

**Weston is small enough to feel welcoming, but big on things to do. There's something very special about a place that brings together traditional seaside fun with modern amenities.**

## Shopping

Weston has loads of the usual well-known high street stores and supermarkets, but you will also find lots of interesting, specialist shops and boutiques in the Meadow Street 'lanes' area. If you want more, shopping heaven Cabot Circus in Bristol is easy to get to by bus or train, Cribbs Causeway shopping mall is a quick drive away via the M5, and for the bargain hunters, Clarks Village factory outlet is nearby in Street.

## Eating out

You have a wide choice of restaurants in Weston and the surrounding area. Choose from Chinese, Mexican, Indian, Italian, French, Japanese and Thai food, and there are lots of fast food outlets and restaurants offering affordable options for all kinds of budgets.

At college, our campus restaurants offer everything from snacks and light lunch menus to more extensive four course meals at very reasonable prices.

## Beach life

Weston-super-Mare has miles of beaches, dunes and rock pools. Whatever the time of year and whatever the weather, there is always something to do. Choose from:

- Body boarding
- Kite flying
- Jet skiing
- Sand surfing
- Water skiing
- Windsurfing

## Leisure activities

There's a cinema, two theatres, museums, libraries, sport and leisure centres, swimming pools, tenpin bowling, pubs and clubs.

## Special events

Weston is famous for hosting International Beach Volleyball, Summer Sets On The Beach, Enduro – beach motorbike racing and Weston's Sand Sculpture Festival.

## Bristol and Bath and further afield

Weston-super-Mare is in the sunny South West of England. It's close to the vibrant harbourside city of Bristol, and from there you can get speedy rail links to London. You can also travel to Bath and Cardiff easily and quickly.

Our closest city, Bristol is exciting, bustling and diverse. It has great facilities, loads of entertainment and is popular with students looking for an alternative to a night out in Weston-super-Mare.

Bath is beautiful, lively place with loads going on - it's England's only World Heritage City.

The Welsh capital, Cardiff is easy to get to and a great place to visit, with excellent shopping, culture and night life.

We are only 30 minutes drive from the market town of Taunton, and striking distance from Dartmoor and Exmoor National Park, Glastonbury Tor and Stonehenge.

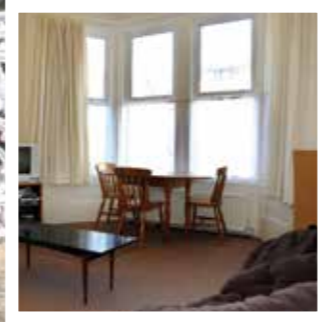
# Ashcombe Road

Our Ashcombe Road property is within easy access of town and both campuses, it has a garden and is very close to the park!

The property is also fully furnished; each room has a single bed, sink, desk, wardrobe, chest of drawers and a bedside cabinet.

There are adequate plug sockets and a TV outlet socket in each room (if you should wish to bring your own TV then you will need to purchase a TV licence).

- A 10 minute walk away from the town centre and the Knightstone Campus
- A five minute walk from the bus stop that goes into town and to the University Campus.
- Three shared bathrooms (including a bath and a shower)
- Three shared kitchens (one includes a washing machine)
- Coin operated tumble dryer
- Communal lounge
- Communal garden
- Cleaners for communal areas
- Internet access - you will need your own ethernet cable.



Great for a picnic  
in the park

Each kitchen is fully equipped with adequate crockery, cutlery, cooking utensils and saucepans. A washing machine/tumble dryer will also be available.

The bathrooms have a shower over the bath, or have a separate shower unit. The communal lounge is furnished and has a TV and DVD player.

**Rooms are categorised as follows:**

- Single standard rooms £102.50 per week.

**All rent includes utility bills.**

Rent is payable for the whole academic year, or payable in three instalments to fall in line with Student Loan/Grant payments.

Upon arrival you will be asked to provide the landlord with three post-dated cheques or provide credit/debit card details to cover the rent for the year. You will be charged a handling fee of 1-1.5% if you choose to pay this way.

Further information regarding the rent payments will be sent to you once your accommodation choice has been confirmed.



# Birnbeck Halls

Birnbeck Halls is our largest property with more than 25 bedrooms, along with communal areas and a games room. Birnbeck Halls is situated in a quiet residential area and we do ask that students bear this in mind when considering this property.

The property is fully furnished; each room has a bed, desk, sink, wardrobe and chest of drawers. There are adequate plug sockets and a TV outlet socket in each room (if you should wish to bring your own TV then you will need to purchase a TV licence).

The property is 15 minutes walk from the town centre and the Knightstone Campus, and has amazing views of the town and beach.

- A 15 minute walk from the Knightstone Campus
- A bus stop opposite goes to the University Campus
- Internet access - you will need your own ethernet cable
- Cleaners for communal areas
- Communal lounge
- Five communal kitchens
- Games room
- Dining room
- Vending machine rooms
- Quiet room
- On-site warden and maintenance support.

Each kitchen is fully equipped with adequate crockery, cutlery, cooking utensils and saucepans. A laundry room is available. The bathrooms have a shower over the bath or a separate shower unit. The communal lounge is furnished and has a TV and DVD player.



## Spectacular views of Weston-super-Mare

### Rooms are categorised as follows:

- Large double room £114.50 per week
- Double rooms with en suite £120.50 per week
- Standard double rooms £112.50 per week
- Single rooms with en-suite £113.50 per week
- Standard single rooms £106.50 per week
- Small single room £95.50 per week.

### All rent includes utility bills.

Rent is payable for the whole academic year, or payable in three instalments to fall in line with Student Loan/Grant payments.

Upon arrival you will be asked to provide the landlord with three post-dated cheques or credit/debit card details to cover the rent for the year. You will be charged a handling fee of 1-1.5% if you choose to pay this way.

Further information regarding rent payments will be sent to you once your accommodation choice has been confirmed.



# Kew Road

Our Kew Road property is divided into smaller flats each with a kitchen and lounge.

It's in a great location, it has a garden and some off - road parking along with ample places to park on the road.

The property is fully furnished; each room has a bed, sink, desk, wardrobe, chest of drawers and a bedside cabinet. There are adequate plug sockets and a TV outlet socket in each room. If you should wish to bring your own TV then you will need to purchase a TV licence.

- A 10 minute walk from the town centre and the Knightstone Campus
- Close access to bus stop that stops close to the University Campus
- Three separate flats all with double rooms
- Five parking spaces
- Cleaner for the communal areas
- Three communal lounges
- Three communal kitchens
- Internet access - you will need your own ethernet cable.



**A quiet location  
close to amenities**

Each kitchen is fully equipped with adequate crockery, cutlery, cooking utensils and saucepans. A washing machine is available. The bathrooms have a shower over the bath or a separate shower unit. The communal lounge is furnished and has a TV and DVD player. The property has limited parking and sea views.

## Rooms are categorised as follows:

- Large double en suite £118.50 per week
- Double en suite £116.50 per week
- Double with private shower/bathroom £114.50 per week
- Single en suite £110.50 per week.

## All rent includes utility bills.

Rent is payable for the whole academic year, or payable in three instalments to fall in line with Student Loan/Grant payments.

Upon arrival you will be asked to provide the landlord with three post-dated cheques or credit/debit card details to cover the rent for the year. You will be charged a handling fee of 1 - 1.5% if you choose to pay this way.

Further information regarding rent payments will be sent to you once your accommodation choice has been confirmed.

# Madeira Cove

Our Madeira Cove property is on the seafront, so has great views and is only a short walk from the Knightstone campus.

The property is fully furnished; each room has a bed, sink, desk, wardrobe, chest of drawers and a bedside cabinet. There are adequate plug sockets and a TV outlet socket if you should wish to bring your own TV then you will need to purchase a TV licence.

- A 5 minute walk away from the town centre and the Knightstone Campus
- Situated on the seafront directly opposite the beach
- A 5 minute walk from the bus stop to University Campus
- 4 shared bathrooms
- Cleaner for communal areas
- 3 communal kitchens
- A communal lounge
- Internet access - you will need your own ethernet cable
- 4 car parking spaces available
- Coin operated tumble dryer.

Each kitchen is fully equipped with adequate crockery, cutlery, cooking utensils and saucepans. A washing machine/tumble dryer is available. The bathrooms have a shower attachment for the bath or a separate shower unit. The communal lounge is furnished and has a TV and DVD player.



## Rooms are categorised as follows:

- Large double luxury room with en-suite £123.50 per week
- Double rooms with en-suite £116.50 per week
- Standard double room £112.50 per week
- Single en-suite room £110.50 per week
- Standard single rooms £102.50 per week
- Small single room £93.50 per week.

## All rent includes utility bills.

Rent is payable for the whole academic year, or payable in three instalments to fall in line with Student Loan/Grant payments.

Upon arrival you will be asked to provide the landlord with three post-dated cheques or credit/debit card details to cover the rent for the year. You will be charged a handling fee of 1-1.5% if you choose to pay this way.

Further information regarding rent payments will be sent to you once your accommodation choice has been confirmed.

**The beach is right on  
your doorstep**

# The Alex

The Alex is located in the town centre and situated above a pub so is ideal for students who want to live at the heart of everything that's going on and have a great time.

The Alex is fully furnished; each room has a double bed, sink, desk, wardrobe, chest of drawers and a bedside cabinet. There are adequate plug sockets and a TV outlet socket in each room. If you should wish to bring your own TV then you will need to purchase a TV licence.

- Based in the centre of town
- Less than a 10 minute walk from the Knightstone Campus
- Opposite a bus stop that goes to the University Campus
- Internet access - you will need your own ethernet cable
- Cleaners for communal areas
- Communal lounge
- Two communal kitchens
- Two shared bathrooms/shower rooms.

Each kitchen is fully equipped with adequate crockery, cutlery, cooking utensils and saucepans. A washing machine is available. The bathrooms have a shower over the bath or a separate shower unit. The communal lounge is furnished and has a TV and DVD player.



Within touching distance of the town centre

Rooms are categorised as follows:

- Large double en-suite £118.50 per week
- Double en-suite £116.50 per week
- Standard double £112.50 per week.

All rent includes utility bills.

Rent is payable for the whole academic year, or payable in three instalments to fall in line with Student Loan/Grant payments.

Upon arrival you will be asked to provide the landlord with three post-dated cheques or credit/debit card details to cover the rent for the year. You will be charged a handling fee of 1-1.5% if you choose to pay this way.

Further information regarding rent payments will be sent to you once your accommodation choice has been confirmed.



# Warwick Court

Our Warwick Court property is our quiet halls of residence. It is divided into smaller flats with two or three bedrooms each with its own bathroom and kitchen. This property is usually reserved for students who prefer a quiet place to live where they can study without interruption. Students with particular disabilities may be prioritised to live in this property, so there is likely to be a mix of first, second and third year students.

It's in a great location right on the sea front and close to town and the Knightstone Campus. It also has some off-road parking.

The property is fully furnished; each room has a bed, sink, desk, wardrobe, chest of drawers and a bedside cabinet. There are adequate plug sockets and a TV outlet socket in each room. If you should wish to bring your own TV then you will need to purchase a TV licence.

- A 10 minute walk from the town centre and the Knightstone Campus
- Close access to bus stop that goes to the University Campus
- Six separate flats all with double rooms
- Limited parking spaces
- Cleaner of the communal areas
- Communal lounges
- Communal kitchen
- Internet access - you will need your own ethernet cable.

Each kitchen is fully equipped with adequate crockery, cutlery, cooking utensils and saucepans. A washing machine is available. The bathrooms have a shower over the bath or a separate shower unit. The communal lounge is furnished and has a TV and DVD player.

The property has sea views and limited parking.



## A short walk to Knightstone Campus

### Rooms are categorised as follows:

- Standard double £108.50 per week
- Large double with sea view £114.50 per week.

### All rent includes utility bills.

Rent is payable for the whole academic year, or payable in three instalments to fall in line with Student Loan/Grant payments.

Upon arrival you will be asked to provide the landlord with three post-dated cheques or credit/debit card details to cover the rent for the year. You will be charged a handling fee of 1 - 1.5% if you choose to pay this way.

Further information regarding rent payments will be sent to you once your accommodation choice has been confirmed.



# Private rented accommodation

We have a preferred landlord that we work with for the majority of our student accommodation. They may be able to help you if you wish to source your own accommodation.

The HE Unit will be able to put you in touch with this preferred landlord.



**Types of accommodation available to students in the private sector can be divided into three main types/categories:**

- **Self-contained (non-resident landlord) – self catered**

Accommodation in furnished or unfurnished rooms within a shared house or flat. Students share a kitchen and bathroom with the other residents and may also have shared use of a communal living room. Bedding, kitchen utensils, crockery and cutlery will usually not be provided.

- **Resident landlord – self catered**

Accommodation in a landlord's home where no meals are provided. Students usually share a kitchen and bathroom with the landlord and may have a communal living room. Accommodation will generally be in furnished single rooms with reasonable facilities for study, not necessarily in the same room.

- **Resident landlord – catered**

Accommodation in a landlord's home where at least one meal a day is provided.

Students usually share the bathroom with the landlord, have access to the kitchen and sometimes the living room. Accommodation is in a furnished room with reasonable facilities for study, not necessarily in the same room.

**If you would like more information on private rented accommodation then please contact the HE Unit who are always happy to help.**



# How to apply

There is plenty of accommodation in Weston-super-Mare for students and a variety of choices available. However, some accommodation is more popular than others so if you want to be allocated your preferred choice, our top tip is... **apply early!**

Accommodation is allocated on a first come, first served basis and will be prioritised for those students that are new to the area, and those students that select one of our Foundation Degrees as their first choice course via UCAS.

Our accommodation application form will be sent to you automatically, (normally in June) once you have accepted an offer with us. Please complete this form and return back to the HE unit with a deposit cheque made payable to Skylight Property. We will write back to you to confirm we have received your application and deposit.

## When will I find out the result of my application?

We normally start allocating students accommodation during the summer months, and we aim to confirm all accommodation allocations by the end of August once your results have been confirmed.

## Accommodation can only be secured by the HE Unit receiving a deposit cheque.

## What if I require accommodation and miss the deadline?

If you submit your application and have missed our deadline for applying for accommodation please do not worry. We can help you to find private accommodation that suits your needs. Contact us and we will be happy to help you.

## What if I don't get the results I need?

Many students will receive examination results in August and will begin preparing for their studies at Weston College. If your results are not what you expect, please call us so we can discuss your options.

# Conditions of offer

1. Weston College will offer HE student accommodation to all full-time UCAS applicants that have applied to study a Foundation Degree at Weston College for their first year of study provided that the applicant:

- accepts an offer of a place on a Foundation Degree at Weston College as their first choice
- requires the accommodation for a full letting period for single occupancy
- pays the deposit requested.

2. Applications for HE student accommodation are generally processed in the order that they are received and early completion of the booking form may help an applicant to secure their preferred accommodation, along with the deposit cheque. However, an allocation to the preferred choice(s) cannot be guaranteed. A limited number of places are reserved and allocated by the College at its discretion.

3. Weston College reserves the right to withdraw an offer of accommodation if the applicant fails to meet admission requirements or if a programme is withdrawn.

4. Weston College is not able to provide accommodation for students' partners, their families or other dependants, or for students at associated institutions. However our preferred landlord may be able to help.

5. Weston College has absolute discretion to make the final decision about which accommodation should be offered to individual students.

Our accommodation is limited so if you apply late or select us as second choice, we may not be able to accommodate you in our residents. However, we will work with you and help you to meet other students in similar situations to find a house with our preferred landlord. In this situation rent would be comparable to a standard room and you will have a similar contract, i.e. inclusive of bills payable for the academic year in three instalments.

# Finance and contract

If you are offered accommodation you will be asked to sign a contract with the landlord on your arrival. This is a legally binding contract which sets out the terms and conditions of your residency.

Please read your contract fully before signing so that you are clear what is expected of you and what you can expect from your landlord.

**The following list is not exhaustive, but gives you an overview of some of the main points:**

- The contract runs for a full academic year (48 weeks) which includes Christmas and Easter breaks
- If you wish to leave your accommodation you will continue to be liable to pay contract fees until a replacement student has signed a new contract for your room
- Guests are not permitted to stay at any of the properties without the permission of the landlord. All requests must be put in writing with a minimum of 48 hours notice
- Students are responsible for ensuring their own room is tidy, that washing up is done, and communal areas are kept tidy and rubbish / recycling is put out on the appropriate days
- You will be asked for a guarantor when you sign your contract, this would normally be a parent/guardian.

## Initial payment

Before you move into your accommodation you will be asked to pay a deposit. The payment must be made when you complete your accommodation application form, in order to reserve your accommodation. This will be returned to you on inspection of your room and all communal areas at the end of your contract, providing it's in the same condition as when you moved in. However, if you choose to withdraw from the course less than two weeks before the start of term, your deposit will not be refunded.



# Getting to college if you are living at home

## By bike

There are lots of benefits to coming to college by bike, including:

- Saving money on fuel
- Keeping fit, healthy and in shape
- No queuing
- Reducing carbon emissions, which is good for the environment.

We are keen for students to cycle, so we have plenty of cycle racks - please feel free to use them!

## By bus

### Discounted bus travel

To help you get to college, we offer our full-time students a big discount on bus travel. You'll need a pass which currently costs £55 per term (we have three terms a year). It can be used on any local First Bus routes, all week long, during term-time.

You can also use your pass to travel to and from work experience placements. We work closely with First Bus to make sure we have a bus service that covers all our campuses.

Most of our full-time students travel easily to college with First Bus from across the region either using a dedicated college bus service or a normal route, depending on where they live.

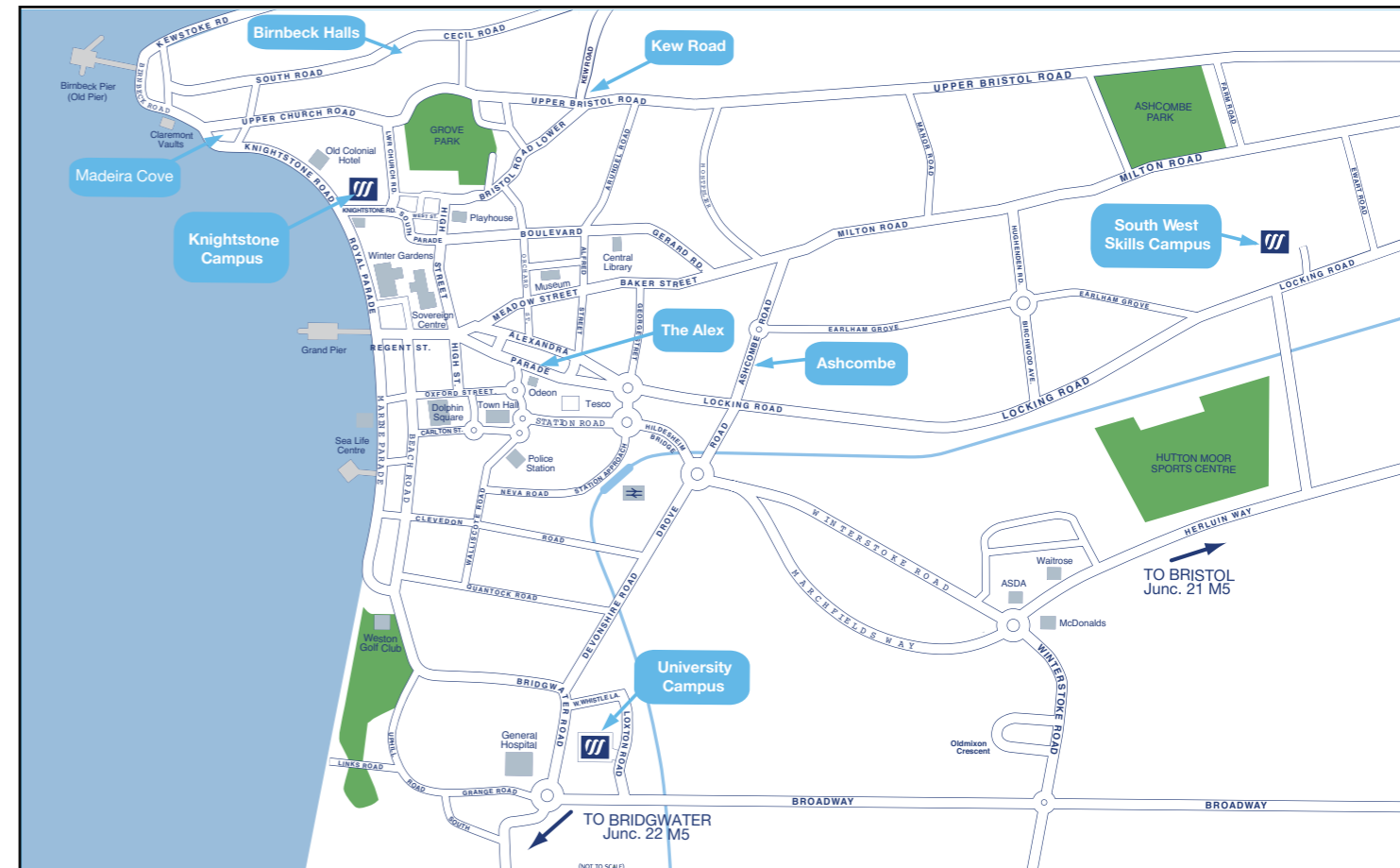
There are frequent buses from within the Weston area, as well as direct buses from Bath, Bristol, Clevedon, Nailsea, Portishead, Burnham-on-Sea, Wells, Bridgwater and the surrounding areas. This gives you the flexibility to come and go as you wish.



## By rail

Weston-super-Mare is on the main line from Bristol to Exeter. This line includes the following stations: Backwell, Bath, Bridgwater, Bristol, Highbridge, Nailsea, Taunton, Yatton.

The Knightstone Campus is no more than 10 minutes walk from the Weston-super-Mare station, and the University Campus is a 10 minutes bus ride. The South West Skills Campus is a 10 minute walk away from Weston Milton train station.



## By road

All three campuses are easy to get to by road, being just 10 minutes drive from the M5, junction 21. The main A-roads, the A371 and A370 go into Weston-super-Mare and connect up with the A38. This makes Weston College accessible from all sides of Weston-super-Mare and the surrounding areas. See our map for your route to college.

**To reduce our carbon footprint, we encourage students to travel to college by public transport, or better still, by foot or bike.**

**All of our accommodation is accessible via these means.**



# Summary of properties



Rooms available





En-suites available



Parking available

Ashcombe	7	0	no
Kew Road	10	5	yes
Madiera Cove	15	4	limited
Birnbeck Halls	27	11	no
The Alex	8	4	no
Warwick Court	16	2	limited

 **Please note** for health and safety reasons, some electrical items are not permitted in students' rooms. These include items such as small fridges, microwaves, kettles and electrical heaters. We will ensure all the essential items you will need are in the property so you should not need to bring any of these items with you. Should you need to bring non-standard electrical items, the landlord will arrange a PAT test for them within the first few weeks of term (a small fee will be payable). Further information will be in your contract, that will be sent to you once your accommodation has been confirmed.

 **Well connected**  
All of our properties have internet access - you will need to provide your own ethernet cable.


 **Don't forget**  
You will need to bring your own towels and bedding - including duvets and pillows.

# Useful contacts

## Avon & Somerset Constabulary

### Weston-super-Mare Police Station

Walliscote Road  
Weston-super-Mare  
North Somerset  
BS23 1UU


 0845 4567 000

## New Court Surgery Weston-super-Mare


39 Boulevard  
Weston-super-Mare  
North Somerset  
BS23 1PF

 **Appointments: 01934 624 242**  
**Out of Hours: 0845 121 0235**

## College Nurse

 01934 411 535  
07768 770594

## HE Unit

 01934 411 403  
07768 242510


## Weston-super-Mare train station

Station Approach  
Weston-super-Mare  
North Somerset  
BS23 1XY


 08457 484 950

## NHS Walk in Centre

12-14 The Boulevard,  
Weston-super-Mare  
North Somerset  
BS23 1NA

 01934 724 009

## Samaritans

 01934 632 555  
08457 90 90 90

 [www.facebook.com/westoncollegehe](https://www.facebook.com/westoncollegehe)

 [www.twitter.com/westoncollege](https://www.twitter.com/westoncollege)

 [www.weston.ac.uk/go360](http://www.weston.ac.uk/go360)

 [www.weston.ac.uk](http://www.weston.ac.uk)

 [he.unit@weston.ac.uk](mailto:he.unit@weston.ac.uk)

**Weston College Knightstone Campus**  
Knightstone Road, Weston-super-Mare BS23 2AL

 **01934 411 411**

**Weston College University Campus**  
Loxton Road, Weston-super-Mare BS23 4QU

 **01934 411 600**